

IPcoax 1400



Application: FTTH for Multiple Dwelling Units **WAN Interface:** Point to Point single GigE or Gigabit E-Ring with Two GigE Ports **Service Ports:** Four 100Mbps HPNA 3 ports with optional RF CATV, Four optional RF Coax Video inputs, one 10/100Mbps Ethernet Admin Port

Interoperable with: GigE ports on Ethernet switches (Cisco, Force10, Foundry, etc.). GigE ports on Broadband DLCs (Occam, Calix, Tellabs, Alcatel), SONET/SDH platforms, All RHINO E-Ring

Application: FTTH for Multiple Dwelling Units **WAN Interface:** Point to Point single GigE or Gigabit E-Ring

IPcoax 1410



Application: FTTH for Multiple Dwelling Units with VLAN termination and tagging **WAN Interface:** Point to Point single GigE or Gigabit E-Ring with Two GigE Ports **Service Ports:** Four 100Mbps HPNA v3.1 ports with optional RF CATV, Four optional RF Coax Video inputs, one 10/100Mbps Ethernet Admin Port

Interoperable with: GigE ports on Ethernet switches (Cisco, Force10, Foundry, etc.). GigE ports on Broadband DLCs (Occam, Calix, Tellabs, Alcatel), SONET/SDH platforms, All RHINO E-Ring

Application: FTTH for Multiple Dwelling Units **WAN Interface:** Point to Point single GigE or Gigabit E-Ring

IPcoax 2400



Applications: FTTH for MDU single IP service, IP Video Camera Transport **WAN Interface:** Point to Point single GigE or Gigabit E-Ring with Two GigE Ports **Service Ports:** Twenty four 10Mbps HPNA 3 ports, one 10/100Mbps Ethernet Admin Port

Interoperable with: GigE ports on Ethernet switches (Cisco, Force10, Foundry etc.). GigE ports on Broadband DLCs (Occam, Calix, Tellabs, Alcatel), SONET/SDH platforms, All RHINO E-Ring

CEB-402



Application: Single residence HPNA 3 over existing coax **Coax Interface:** HPNA 3 **Service Ports:** Two 10/100 Ethernet Ports with RJ-45 jacks

Key Features: Can be configured as Master or Client, Lowband and Midband versions

Interoperable with: HPNA 3 ports on all RHINOs, IPcoax 2400, other HPNA 3 masters or clients including HPNA enabled IPTV set-top boxes

CEB-411



Application: Single residence HPNA 3 over existing coax **Coax Interface:** HPNA 3

Service Ports: One 10/100 Ethernet Ports with RJ-45 jack

Key Features: Can be configured as Master or Client, Lowband and Midband versions

Interoperable with: HPNA 3 ports on all RHINOs, IPcoax 2400, other HPNA 3 masters or clients including HPNA enabled IPTV set-top boxes

CEB-512



Application: Multiple Dwelling Units HPNA 3 over existing coax

Coax Interface: HPNA 3 Midband

Service Ports: Two 10/100 Ethernet Ports with RJ-45 jacks

Key Features: Used as HPNA client in Units to provide data privacy

Interoperable with: IPcoax 1400/1410 FTTH MDU platform HPNA ports

SEB-401



Application: Single residence HPNA 3 over existing coax to Amino Set-top box

Coax Interface: HPNA 3 **Service Ports:** 10/100 Ethernet port to Amino, DC power adapter

Key Features: Configured as Client, Lowband and Midband versions available

Interoperable with: HPNA 3 ports on all RHINOs, IPcoax 2400, other HPNA 3 masters. Smartfoot supports Amino 110, 120, 125 and 130 set-top boxes

RHINO IPC

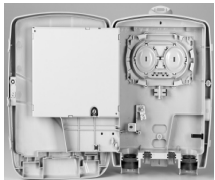


Application: IP Video Cameras, FTTH MDU **WAN Interface:** Point to Point single GigE or Gigabit E-Ring with Two GigE Ports

Service Ports: Four 10/100 Ethernet Ports, One HPNA V3.1 port MDU enabled

Interoperable with: GigE ports on Ethernet switches (Cisco, Force10, Foundry, etc.). GigE ports on Broadband DLCs (Occam, Calix, Tellabs, Alcatel), SONET/SDH platforms, RHINO GTO-R3

RHINO Outdoor Enclosures



Application: All outdoor or environmentally hardened situations **Cable Interface:** Fiber Drop cables for Splice/Connectors, OptiTap Connector optional Ground connection, cables to home

Optical connector bulkhead: dual LC to LC connectors standard

Identical to: Corning OptiWay enclosure

Interoperable with: All FTTH network construction practices

UPS Power Supply



Application: Power holdover for IPcoax 1400 and RHINO +12V input

AC Interface: 87-246VAC, 40-70Hz

Alarm Ports: On Battery, Replace Battery, Battery Missing, Low Battery

Identical to: CyberPower CS24U12V

Interoperable with: All IPcoax and RHINOs with 12V input connector

Optical SFPs

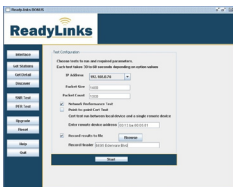


Application: All optical IPcoax and RHINO WAN and GigE ports **Speed:** 100Mbps and 1Gbps

Media types: Single mode: single fiber, dual fiber, Multimode dual fiber, Cat5e copper

Interoperable with: All ReadyLinks Optical SFP slots, several GigE or 100Mbps ports on Gigabit Ethernet switches (Force10, Foundry, etc.), several Broadband DLCs (Occam, etc.)

BONUS Software



Application: HPNA Device and Network Management. Performs: HPNA Network Auto-Discovery, Device Administration, HPNA link Testing, HPNA device Firmware Download

Host Computers: Windows XP, Windows Vista, Linux

Interoperable with: All ReadyLinks HPNA 3 equipped IPcoax and RHINO products

Note: specifications are subject to change. v2